

Site Location

Site Location

Approximate Site Boundary (±11.00 acres)



Sources: Esri, HERE, DeLorme, USGS, Intermap, increment P Corp., NRCAN, Esri Japan, METI, Esri China (Hong Kong), Esri (Thailand), MapmyIndia, © OpenStreetMap contributors, and the GIS User Community

**SMART-SCIENCES**  
Environmental Consulting  
330 SW 27th Ave, Suite 504, Miami, FL 33135  
P: 786.313.3977 F: 305.356.4333  
www.smart-sciences.com

CHECKED BY: GB	DRAWN BY: ABB	PROJECT NUMBER 2015-0062-001
----------------	---------------	---------------------------------

**Beacon Lakes NW 122nd Ave**  
NW 122 Ave west of Florida Turnpike,  
and between NW 25 St and NW 41 St  
Section 25, Township 53S, Range 39E  
Medley, Miami-Dade County, Florida

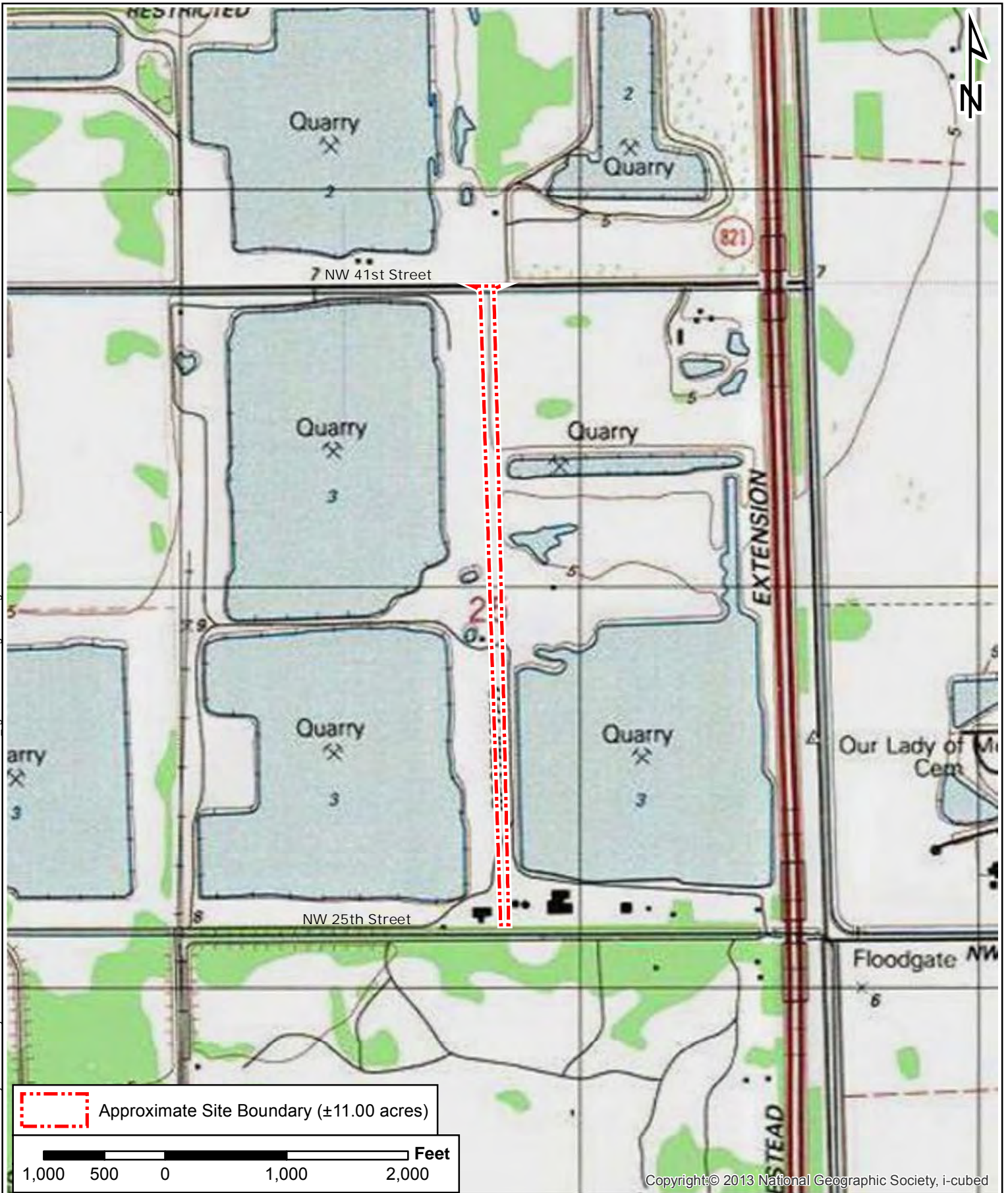
**FIGURE 1**

**Location Map**

SCALE: As Shown	DATE: 8/25/2016
-----------------	-----------------



Document Path: M:\Projects\2015 Projects\2015-0062-001 Beacon Lakes CDDNW 122nd Avenue\4 figures and drawings\GIS\Figure 2 - USGS Map.mxd



**SMART-SCIENCES**  
Environmental Consulting

330 SW 27th Ave, Suite 504, Miami, FL 33135  
P: 786.313.3977 F: 305.356.4333  
www.smart-sciences.com

**Beacon Lakes NW 122 Ave**

NW 122 Ave west of Florida Turnpike,  
and between NW 25 St and NW 41 St  
Section 25, Township 53S, Range 39E  
Medley, Miami-Dade County, Florida

**USGS Map**

FIGURE

**2**

CHECKED BY: GB

DRAWN BY: ABB

PROJECT NUMBER  
2015-0062-001

SCALE: As Shown

DATE: 9/13/2016



Document Path: M:\Projects\2015-0062-001 Beacon Lakes CDDNW 122nd Avenue\4 figures and drawings\GIS\Figure 3 - Aerial Map.mxd



**SMART-SCIENCES**  
Environmental Consulting

330 SW 27th Ave, Suite 504, Miami, FL 33135  
P: 786.313.3977 F: 305.356.4333  
www.smart-sciences.com

### Beacon Lakes NW 122 Ave

NW 122 Ave west of Florida Turnpike,  
and between NW 25 St and NW 41 St  
Section 25, Township 53S, Range 39E  
Medley, Miami-Dade County, Florida

### 2015 Aerial Map

FIGURE

# 3

CHECKED BY: GB

DRAWN BY: ABB

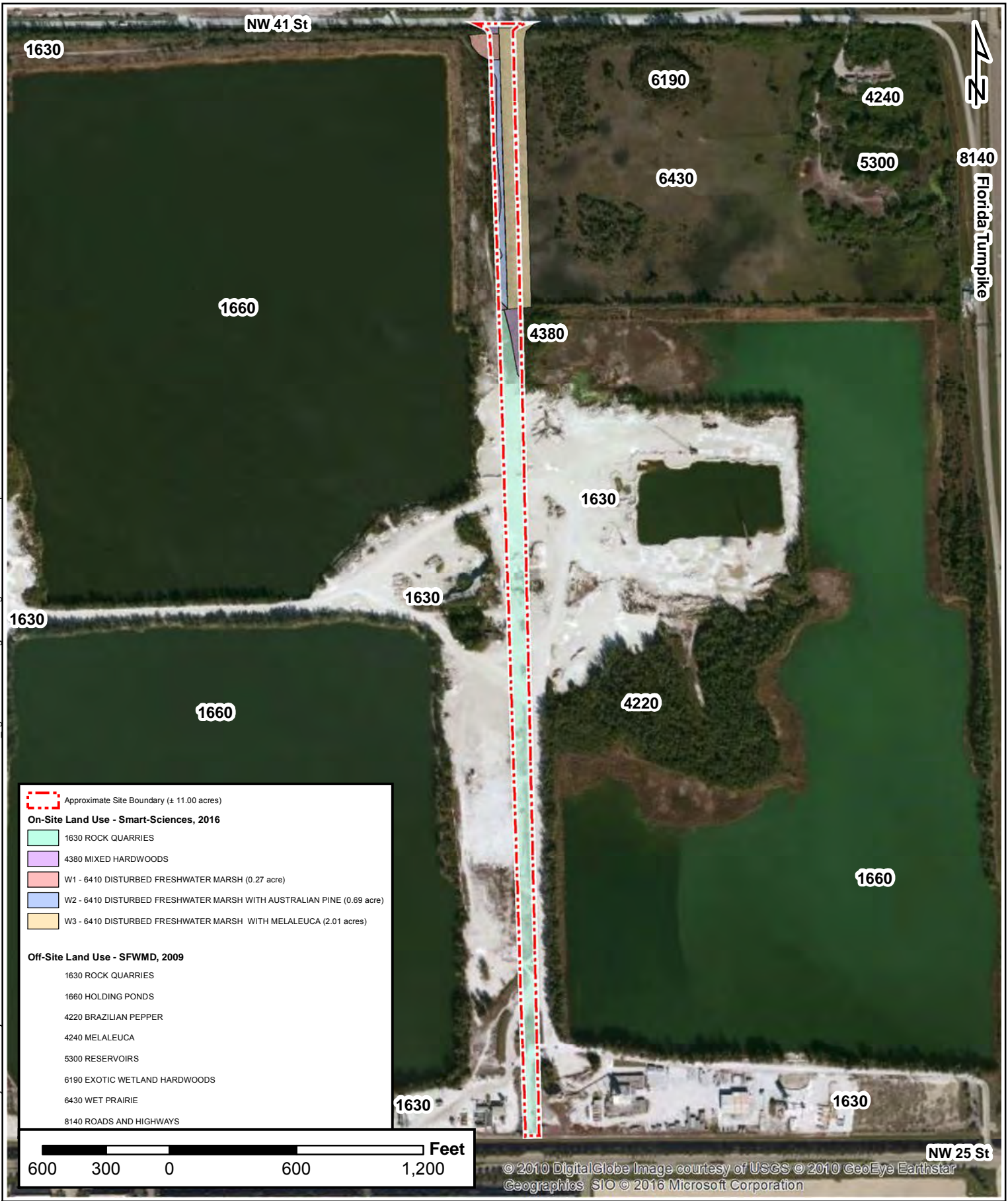
PROJECT NUMBER  
2015-0062-001

SCALE: As Shown

DATE: 9/13/2016



Document Path: M:\Projects\2015 Projects\2015-0062-001 Beacon Lakes CDDNW 122nd Avenue\4 figures and drawings\GIS\Figure 5 - Land Use Map.mxd



© 2010 DigitalGlobe Image courtesy of USGS © 2010 GeoEye Earthstar Geographics SIO © 2016 Microsoft Corporation

**Approximate Site Boundary** (± 11.00 acres)

**On-Site Land Use - Smart-Sciences, 2016**

- 1630 ROCK QUARRIES
- 4380 MIXED HARDWOODS
- W1 - 6410 DISTURBED FRESHWATER MARSH (0.27 acre)
- W2 - 6410 DISTURBED FRESHWATER MARSH WITH AUSTRALIAN PINE (0.69 acre)
- W3 - 6410 DISTURBED FRESHWATER MARSH WITH MELALEUCA (2.01 acres)

**Off-Site Land Use - SFWMD, 2009**

- 1630 ROCK QUARRIES
- 1660 HOLDING PONDS
- 4220 BRAZILIAN PEPPER
- 4240 MELALEUCA
- 5300 RESERVOIRS
- 6190 EXOTIC WETLAND HARDWOODS
- 6430 WET PRAIRIE
- 8140 ROADS AND HIGHWAYS



**SMART-SCIENCES**  
Environmental Consulting

330 SW 27th Ave, Suite 504, Miami, FL 33135  
P: 786.313.3977 F: 305.356.4333  
www.smart-sciences.com

CHECKED BY: GB	DRAWN BY: ABB	PROJECT NUMBER 2015-0062-001
----------------	---------------	---------------------------------

**Beacon Lakes NW 122 Ave**

NW 122 Ave west of Florida Turnpike, and between NW 25 St and NW 41 St  
Section 25, Township 53S, Range 39E  
Medley, Miami-Dade County, Florida

**Land Use Map**

SCALE: As Shown    DATE: 9/14/2016

FIGURE  
**4**



Document Path: M:\Projects\2015-0062-001 Beacon Lakes CDDNW 122nd Avenue\4 figures and drawings\GIS\Figure 4 - Soils Map.mxd



**SMART-SCIENCES**  
Environmental Consulting

330 SW 27th Ave, Suite 504, Miami, FL 33135  
P: 786.313.3977 F: 305.356.4333  
www.smart-sciences.com

**Beacon Lakes NW 122 Ave**

NW 122 Ave west of Florida Turnpike,  
and between NW 25 St and NW 41 St  
Section 25, Township 53S, Range 39E  
Medley, Miami-Dade County, Florida

**Soils Map**

FIGURE

**5**

CHECKED BY: GB

DRAWN BY: ABB

PROJECT NUMBER  
2015-0062-001

SCALE: As Shown

DATE: 9/13/2016



NW 41 St



SP1

SP4

6190

6430

SP2

4380

SP3

Approximate Site Boundary (±11.00 acres)

Soil Points (SP)

Proposed right-of-way line

**On-Site Wetlands - Smart-Sciences, 2016**

- W1 - 6410 DISTURBED FRESHWATER MARSH (0.27 acre)
- W2 - 6430 DISTURBED FRESHWATER MARSH WITH AUST. PINE (0.69 acre)
- W3 - 6410 DISTURBED FRESHWATER MARSH WITH MELALEUCA (2.01 acres)

**Secondary Impacts (50 ft. buffer) - Smart-Sciences, 2016**

- 6430 DISTURBED FRESHWATER MARSH WITH AUSTRALIAN PINE (0.01 acre)
- 6410 DISTURBED FRESHWATER MARSH (0.13 acre)
- 6410 DISTURBED FRESHWATER MARSH WITH MELALEUCA (2.01 acres)

**Off-Site Wetlands - SFWMD, 2009**

- 6190 EXOTIC WETLAND HARDWOODS
- 6410 DISTURBED FRESHWATER MARSH
- 6430 WET PRAIRIE

Notes:

1. Eastern limit of site boundary extends 28 ft. east of right-of-way line to include temporary construction easement.
2. Secondary impacts calculated 50 ft. beyond site boundary.
3. W3 extends beyond eastern limit of secondary impacts.



© 2010 DigitalGlobe © 2010 GeoEye © 2016 Microsoft Corporation

Document Path: M:\Projects\2015\0062-001 Beacon Lakes CDDNW 122nd Avenue\4 figures and drawings\GIS\Figure 6 - Wetland Map.mxd



330 SW 27th Ave, Miami, FL 33135  
P: 786.313.3977 F: 305.356.4333  
www.smart-sciences.com

### Beacon Lakes NW 122 Ave

NW 122 Ave west of Florida Turnpike, and between NW 25 St and NW 41 St Section 25, Township 53S, Range 39E Medley, Miami-Dade County, Florida

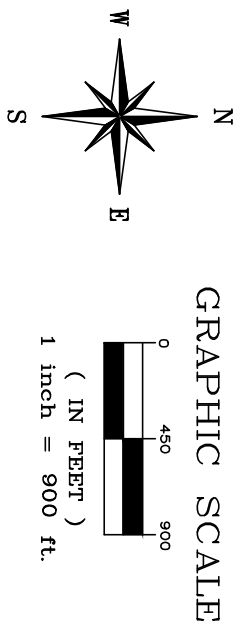
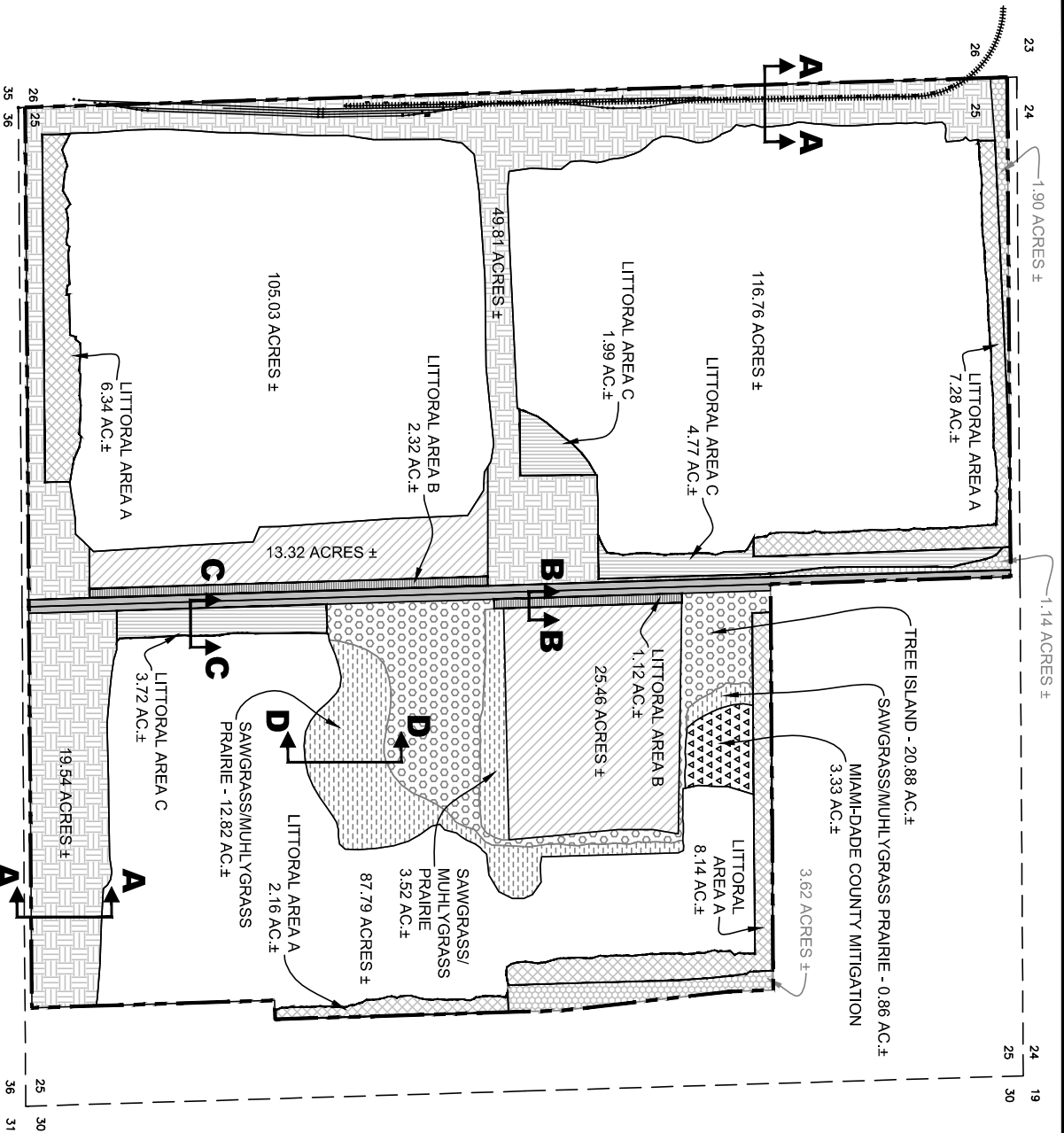
### Wetland Map

FIGURE

# 6

CHECKED BY: GB DRAWN BY: ABB PROJECT NUMBER 2015-0062-001

SCALE: As Shown DATE: 9/13/2016



- LITTORAL A = 23.92± ACRES
- LITTORAL B = 3.44± ACRES
- LITTORAL C = 10.48± ACRES
- TREE ISLAND = 20.88± ACRES
- SAWGRASS/MUHL YGRASS PRAIRIE = 17.2± ACRES
- MIAMI-DADE COUNTY MITIGATION = 3.33± ACRES
- NATURAL GRADE
- EXISTING PIT
- PROPOSED RIGHT OF WAY FOR N.W. 122ND AVENUE  
EAST 35' OF 122ND = 3.15± ACRES  
WEST 35' OF 122ND = 4.19± ACRES  
+2.9' ON WEST SIDE = 0.34± ACRES
- REMAINING AREA TO BE MINED
- LAND TO REMAIN

- NOTES:**
- 1) ACTUAL ACRES AND BOUNDARIES SUBJECT TO FIELD VERIFICATION.
  - 2) LITTORAL AREAS MAY BE MINED TO DEPTH AND REFILLED.
  - 3) ANY AREA NOT MINED WILL HAVE A FINAL ELEVATION ABOVE THE MIAMI/DADE FLOODPLAIN CONTROL ELEVATION.
  - 4) FINAL ELEVATIONS TO BE CONFIRMED AT THE TIME OF LITTORAL AREA CONSTRUCTION AND BASED UPON SPECIFIC GROUNDWATER ELEVATIONS FOR THE SUBJECT AREA.
  - 5) REFER TO FIGURE 6 FOR PLANTING SPECIFICATIONS.

SECTION 25  
TOWNSHIP 53 S  
RANGE 39 W

**Modified Reclamation Plan  
Option 1**

PROJECT NO.	135969
DRAWN:	8/13/2014
DRAWN BY:	NL
CHECKED BY:	EM
FILE NAME:	13-0812-Modified Reclamation Plan.dwg



The information included on this graphic representation has been compiled from a survey conducted by Kleinfelder, Inc. or its subcontractors. It is intended for use as a final survey product and is not intended for use as a construction design document. The use or misuse of the information contained on this graphic representation is at the sole risk of the party using or misusing the information.

SAJ-1992-00489(IP-LAO)  
Mod 3  
Drawing 2 of 8  
Replaces Drawing 2 of 6 in  
Mod 2

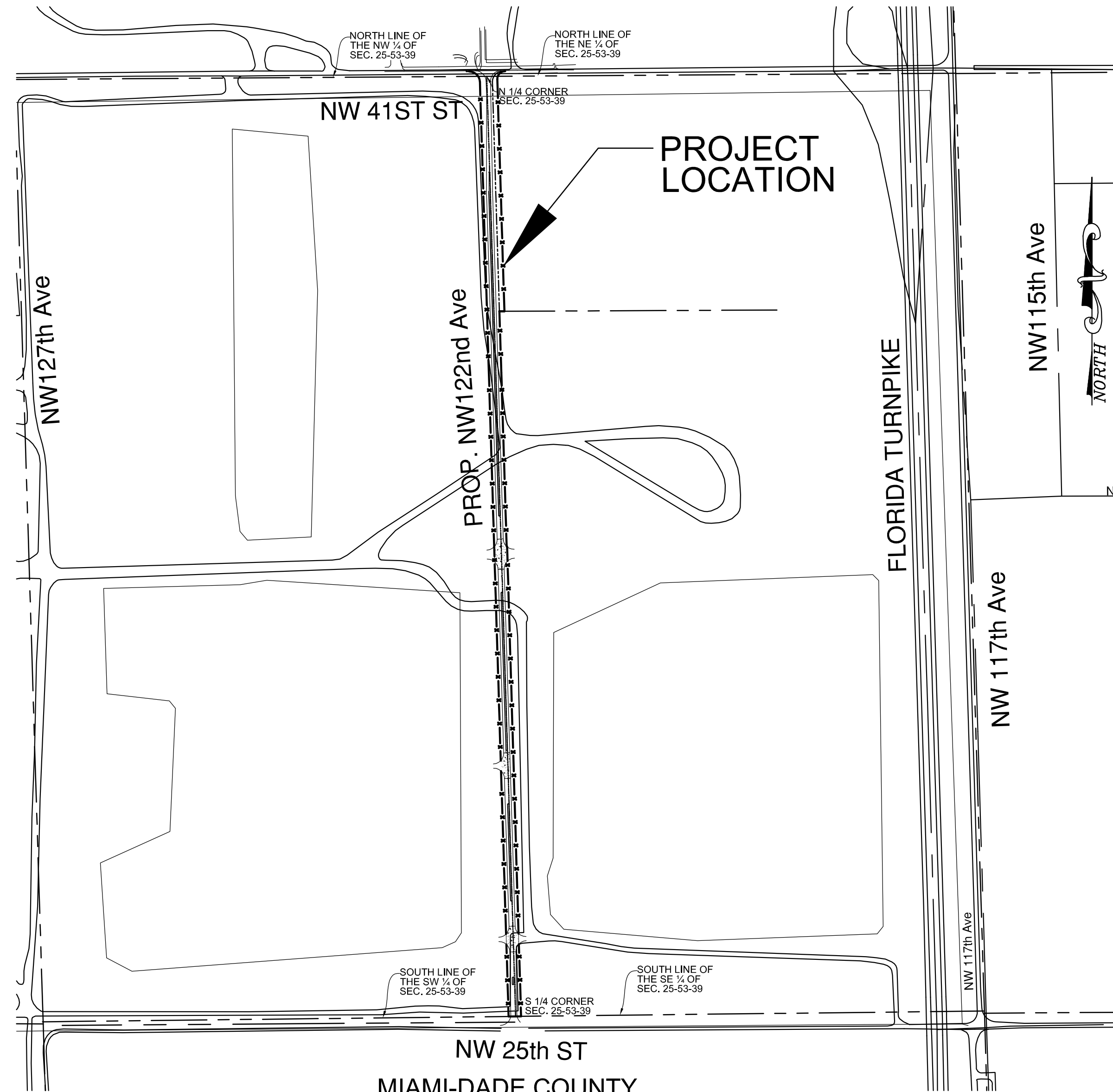


# AMB CODINA BEACON LAKES LLC

## NW 122nd AVENUE FROM NW 25th STREET TO NW 41st STREET

### STORMWATER POLLUTION PREVENTION PLAN

#### STORMWATER POLLUTION PREVENTION PLAN (SWPPP) NOTES:



MIAMI-DADE COUNTY  
SEC 25-53-39  
LOCATION MAP  
SCALE: 1" = 500'

#### INDEX OF DRAWINGS

SHEET No.	DESCRIPTION
1.	LOCATION MAP, NOTES AND SPECIFICATIONS
2.	PLAN
3.	PLAN AND DETAILS

#### A. GENERAL NOTES

1. ALL EROSION CONTROLS MUST BE IMPLEMENTED PRIOR TO COMMENCEMENT OF CONSTRUCTION ACTIVITIES.
2. ALL ENVIRONMENTAL CONTROL FEATURES ARE TO BE MAINTAINED THROUGHOUT THE LIFE OF THE PROJECT IN ACCORDANCE WITH FDEP NPDES REQUIREMENTS. THE CONTRACTOR MUST ENSURE THAT ALL EROSION CONTROL FEATURES FUNCTION PROPERLY AT ALL TIMES.
3. ALL EROSION AND MATERIAL DEPOSITS MUST BE CONTAINED WITHIN THE PROJECT LIMITS.
4. ANY DAMAGED OR INEFFECTIVE GRAVEL FILLED BAGS ARE TO BE REPLACED WITH NEW ONES. THE LOCATION OF GRAVEL FILLED BAGS INSTALLATION IS AS MENTIONED IN EROSION CONTROL PLANS. THE PROJECT ENGINEER MAY SPECIFY OTHER AREAS AS NECESSARY.
5. INLETS SHALL BE PROTECTED FROM SEDIMENT INTAKE UNTIL PROJECT IS COMPLETE. ELEVATION OF GROUND OUTSIDE INLET TOP SHALL NOT BE HIGHER THAN INLET TOP.
6. COMPLETED INLETS SHALL BE PROTECTED TO PREVENT SEDIMENT INTAKE FROM OTHER AREAS UNTIL THE PROJECT IS COMPLETE.
7. ALL FILL EMBANKMENT AND GRADED AREAS SHALL BE PROTECTED AGAINST EROSION.
8. STOCKPILED MATERIALS SHALL NOT BE LEFT IN EROSION PRONE AREAS UNLESS PROTECTED BY COVER AND/OR OTHER APPROPRIATE EROSION CONTROL MEASURES.
9. ANY OFFSITE SEDIMENT DISCHARGE TO A MUNICIPALLY SEPARATE STORM SEWER SYSTEM ARISING FROM THE CONTRACTOR'S ACTIVITIES SHALL HAVE EROSION CONTROLS PROVIDED FOR THOSE INLETS.
10. THE AGGREGATE LAYER OF ALL CONSTRUCTION ENTRANCE GRAVEL BEDS MUST BE AT LEAST 6 INCHES THICK. IT MUST EXTEND THE FULL WIDTH OF THE VEHICULAR INGRESS AND EGRESS AREA. THE LENGTH OF THE ENTRANCE MUST BE AT LEAST 50 FEET. THE ENTRANCE MUST WIDEN AT ITS CONNECTION TO THE ROADWAY IN ORDER TO ACCOMMODATE THE TURNING RADIUS OF LARGE TRUCKS.
11. CONTRACTOR SHALL COMPLY WITH ALL TERMS AND CONDITIONS OF THE U.S. ENVIRONMENTAL PROTECTION AGENCY (EPA) NATIONAL POLLUTANT SEDIMENT AND EROSION CONTROLS AND STORM WATER MANAGEMENT DISCHARGE ELIMINATION SYSTEM (NPDES) PERMIT. IN PARTICULAR, MEASURES SHALL BE STRICTLY FOLLOWED.
12. THE CONTRACTOR SHALL BE RESPONSIBLE FOR THE INSTALLATION AND MAINTENANCE OF ALL EROSION, SEDIMENTATION AND STORM WATER MANAGEMENT MEASURES FOR THE DURATION OF THE PROJECT. ONCE THE PROJECT HAS BEEN COMPLETED, THE CONTRACTOR SHALL REMOVE ALL TEMPORARY STORM WATER MANAGEMENT MEASURES AND SHALL DISPOSE OF THEM ACCORDING TO THE CODE.

#### B. SITE DESCRIPTION

1. CONSTRUCTION ACTIVITY: DRAINAGE AND STREET LIGHT INSTALLATION, PUBLIC ROADWAY CONSTRUCTION.
2. PROJECT LIMITS: REFER TO PROJECT LOCATION SKETCH FOR LIMITS
3. PROJECT DESCRIPTION: ROADWAY PLANS WILL INCLUDE CONSTRUCTION OF ASPHALT AND CONCRETE PAVEMENT. THE DRAINAGE SYSTEM WILL CONSIST OF EXFILTRATION TRENCHES TO COLLECT THE RUNOFF FROM THE PROPOSED PAVEMENT.
4. MAJOR SOIL DISTURBING ACTIVITIES: CLEARING AND GRUBBING, EXCAVATION FOR DRAINAGE FACILITIES AND STREET LIGHTS, PLACEMENT OF FILL AND GRADING.
5. TOTAL PROJECT AREA: 8.618± ACRES  
TOTAL AREA TO BE DISTURBED: 8.618± ACRES
6. LOCATION OF OUTFALLS: NOT APPLICABLE
7. NAME OF RECEIVING WATER: NOT APPLICABLE

#### C. EROSION AND SEDIMENTATION CONTROLS

1. CONTRACTOR SHALL INSTALL A TYPE III SILT FENCE, AS PER FOOT STANDARD INDEX No. 102 (2010), AS SHOWN ON PLANS PRIOR TO ANY FILLING OR GRADING OF ANY PORTIONS OF THE SITE.
2. PROPOSED SWALE INLETS SHALL BE PROTECTED WITH GEO-TEXTILE (FILTER) FABRIC.
3. A GRAVEL ACCESS BED SHALL BE CONSTRUCTED TO MINIMIZE THE EFFECTS OF TRUCK TRAFFIC AND SEDIMENTATION TRACKING BOTH ON AND OFF OF THE SITE.
4. DUST CONTROL: SHOULD THE CONTROL OF DUST AT THE SITE BE NECESSARY, THE SITE WILL BE SPRINKLED UNTIL THE SURFACE IS WET.
5. TOP OF SOIL PILES AND DISTURBED PORTIONS OF THE SITE WHERE CONSTRUCTION ACTIVITY TEMPORARILY CEASES FOR AT LEAST 21 DAYS SHALL BE STABILIZED WITH SEED AND MULCH NO LATER THAN 14 DAYS FROM THE LAST CONSTRUCTION ACTIVITY IN THAT AREA. THE SEEDING SHALL BE RYE (GRAIN) APPLIED AT THE RATE OF 120 POUNDS PER ACRE.
6. DISTURBED PORTIONS OF THE SITE WHERE CONSTRUCTION ACTIVITIES PERMANENTLY CEASE SHALL BE STABILIZED WITH PERMANENT SEED NO LATER THAN 15 DAYS AFTER THE LAST CONSTRUCTION ACTIVITY. SEEDING SHALL BE THE SAME AS IN TEMPORARILY SEEDING. AFTER SEEDING, EACH AREA SHALL BE MULCHED WITH 1.5 TONS OF STRAW PER ACRE, 4 TONS OF WOOD CHIPS PER ACRE, 0.5 TONS OF WOOD FIBERS PER ACRE, OR 50 C.Y. OF SHREDDED BARK CHIPS PER ACRE.

#### D. OTHER CONTROLS

1. ALL CONSTRUCTION WASTE MATERIAL SHALL BE COLLECTED AND STORED IN A SECURED METAL DUMPSTER RENTED FROM A LOCAL WASTE MANAGEMENT COMPANY. THE DUMPSTER WILL MEET ALL LOCAL AND STATE SOLID WASTE MANAGEMENT REGULATIONS. ALL PERSONNEL SHALL BE INSTRUCTED REGARDING THE CORRECT PROCEDURES FOR WASTE DISPOSAL. NOTICES STATING THESE PROCEDURES SHALL BE POSTED IN THE OFFICE TRAILER AND THE CONTRACTOR SHALL BE RESPONSIBLE FOR SEEING THAT THESE PROCEDURES ARE FOLLOWED.
2. ALL SANITARY WASTE SHALL BE COLLECTED FROM THE PORTABLE UNITS A MINIMUM OF ONCE PER WEEK BY A LICENSED SANITARY WASTE MANAGEMENT CONTRACTOR, AS REQUIRED BY LOCAL REGULATIONS.
3. DUMP TRUCKS IMPORTING FILL MATERIALS TO THE SITE SHALL COVER THEIR LOADS WITH A TARPULIN TO AVOID UNNECESSARY GENERATION OF DUST.
4. ALL HAZARDOUS WASTE MATERIALS SHALL BE DISPOSED OF AS PER LOCAL AND/OR STATE REGULATIONS OR AS RECOMMENDED BY THE MANUFACTURER. SITE PERSONNEL SHALL BE INSTRUCTED IN THESE PRACTICES AND THE CONTRACTOR SHALL BE RESPONSIBLE FOR SEEING THAT THESE PROCEDURES ARE FOLLOWED.
5. A STABILIZED CONSTRUCTION ENTRANCE (GRAVEL ACCESS BED) SHALL BE PROVIDED TO HELP REDUCE TRACKING OF SEDIMENTS. THE PAVED STREETS ADJACENT TO THE SITE ENTRANCE SHALL BE SWEEP DAILY TO REMOVE ANY EXCESS OF MUD, DIRT, OR ROCK TRACKED FROM THE SITE.

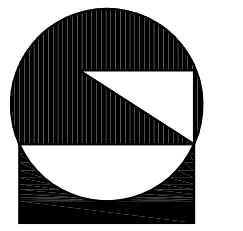
#### E. MAINTENANCE AND INSPECTION PROCEDURES

1. THE GENERAL CONTRACTOR'S SITE SUPERINTENDENT SHALL SELECT AT LEAST ONE INDIVIDUAL WHO WILL BE RESPONSIBLE FOR INSPECTIONS, MAINTENANCE AND REPAIR ACTIVITIES, AND FILLING OUT THE INSPECTION MAINTENANCE REPORT. PERSONNEL SELECTED FOR INSPECTION AND MAINTENANCE RESPONSIBILITIES SHALL RECEIVE PROPER TRAINING IN ALL THE INSPECTION AND MAINTENANCE PRACTICES NECESSARY FOR KEEPING EROSION AND SEDIMENT CONTROLS USED ONSITE IN GOOD WORKING ORDER.
2. CONSTRUCTION ENTRANCE GRAVEL BED: WHEN BEDS BECOME LOADED WITH SEDIMENTS, REMOVE BEDS TO DISPLACE SEDIMENT LOAD AND RE-ESTABLISH EFFECTIVENESS OF THE GRAVEL BEDS.
3. BUILT UP SEDIMENT WILL BE REMOVED FROM THE SILT FENCE WHEN IT HAS REACHED ONE THIRD OF THE HEIGHT OF THE FENCE.
4. SILT FENCE SHALL BE INSPECTED FOR DEPTH OF SEDIMENT, TEARS, IF FABRIC IS SECURELY ATTACHED TO THE FENCE POSTS, AND IF FENCE POSTS ARE FIRMLY IN THE GROUND.
5. TEMPORARY AND PERMANENT SEEDING AND PLANTING SHALL BE INSPECTED FOR BARE SPOTS, WASHOUTS, AND HEALTHY GROWTH.
6. INSPECTION OF EROSION AND SEDIMENTATION CONTROLS BY THE CONTRACTOR'S REPRESENTATIVE SHALL BE PERFORMED EVERY SEVEN CALENDAR DAYS AND WITHIN 24 HOURS OF THE END OF A STORM THAT IS 0.50 INCHES OR GREATER. AN INSPECTION REPORT DESIGNATED FOR THIS PURPOSE SUMMARIZING THE SCOPE OF THE INSPECTION SHALL BE MADE AND RETAINED, AND SHALL IDENTIFY ANY DAMAGE. THE CONTRACTOR SHALL CORRECT DAMAGE OR PROVIDE MAINTENANCE AS RECOMMENDED BY THE REPORT AS SOON AS PRACTICAL BUT IN NO CASE LATER THAN SEVEN CALENDAR DAYS FOLLOWING THE INSPECTION. ALL CONTROLS MUST BE IN GOOD OPERATING CONDITION UNTIL THE AREA THEY PROTECT HAS BEEN COMPLETELY STABILIZED AND THE CONSTRUCTION IS COMPLETED.

#### F. SEQUENCE OF MAJOR ACTIVITIES

1. INSTALL TYPE III SILT FENCE AT BOUNDARIES OF PROPOSED CONSTRUCTION AS SHOWN ON PLAN.
2. CONSTRUCT GRAVEL ACCESS AREA.
3. COMMENCE SITE CONSTRUCTION ACTIVITIES.
4. INSTALL TEMPORARY SEED AND MULCH IN AREAS WHERE CONSTRUCTION TEMPORARILY CEASES FOR AT LEAST 21 DAYS NO LATER THAN 14 DAYS AFTER THE LAST CONSTRUCTION ACTIVITIES.
5. INSTALL PERMANENT SEEDING AND PLANTING IN AREAS WHERE CONSTRUCTION ACTIVITIES HAVE PERMANENTLY CEASED NO LATER THAN 15 DAYS AFTER THE LAST CONSTRUCTION ACTIVITIES.
6. REMOVE ACCUMULATED SEDIMENT.
7. REMOVE TEMPORARY POLLUTION PREVENTION MEASURES AFTER ALL CONSTRUCTION ON SITE HAS BEEN COMPLETED AND DISPOSE OF ACCORDING TO CODE.

**LUDOVICI & ORANGE**  
CONSULTING ENGINEERS, INC.  
329 PALERMO AVENUE, CORAL GABLES, FLORIDA 33134 • 305/448-1000 • LB 1012



STORMWATER POLLUTION PREVENTION PLAN  
LOCATION MAP  
NOTES AND SPECIFICATIONS

AMB CODINA BEACON LAKES LLC  
NW 122nd AVENUE FROM  
NW 25th STREET TO NW 41st STREET

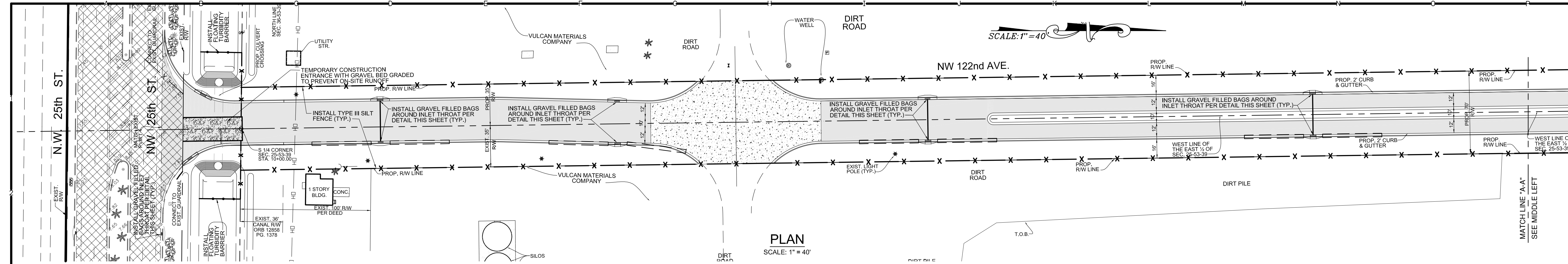
PROJ. NO: 2015 53  
DESIGNED: SVZ  
DRAWN: BBL  
CHECKED: SVZ  
SCALE: AS SHOWN  
DATE: 9/14/16  
SHEET:

**SW-1**  
OF 3 SHEETS

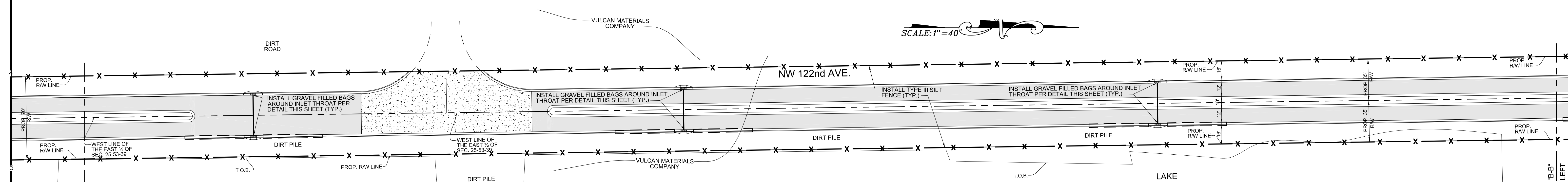
SARAH V. ZIMMERMANN, P.E.  
REGISTERED ENGINEER No. 24242  
STATE OF FLORIDA

\\SERVER\DATA\ENGINEERING\PROJECTS\2015\2015 53 SWPPP\DWG 9/14/2016 12:17:48 PM EDT

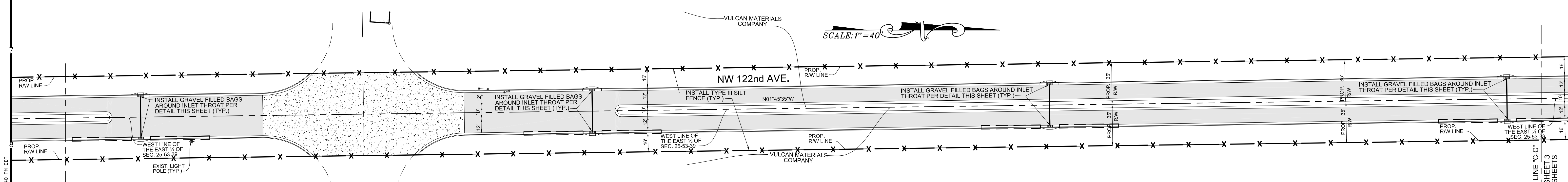




PLAN  
SCALE: 1" = 40'

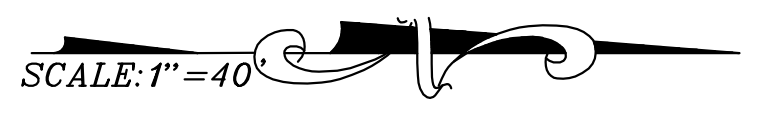
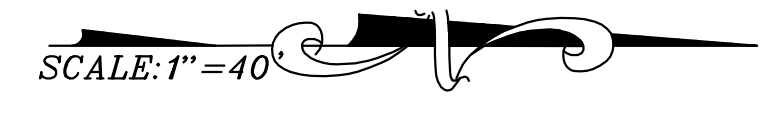


PLAN  
SCALE: 1" = 40'



PLAN  
SCALE: 1" = 40'

\\SERVER\B\B\ENGINEERING\PROJECTS\2015\2015 53 SWPPP\2015 53 SWPPP.dwg 9/14/2016 12:17:48 PM EDT



NO.	DATE	REVISIONS	BY	APP

**LUDOVICI & ORANGE**  
 CONSULTING ENGINEERS, INC.  
 329 PALERMO AVENUE, CORAL GABLES, FLORIDA 33134 • 305/448-1000 • LB 1012

STORMWATER POLLUTION  
 PREVENTION PLAN

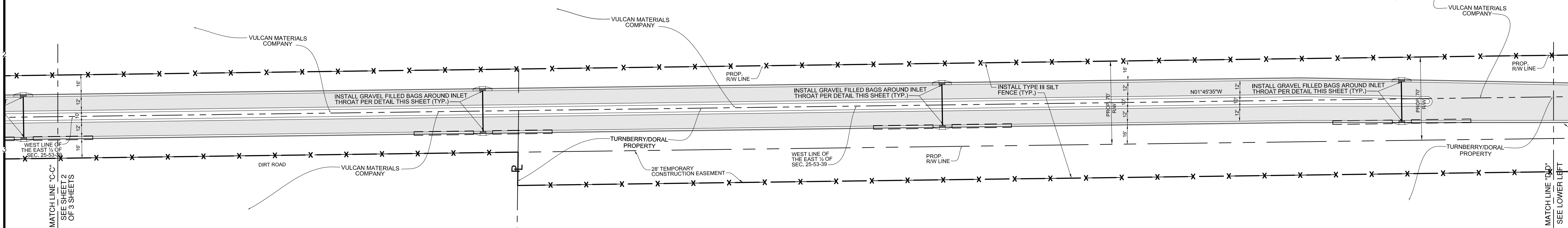
AMB CODINA BEACON LAKES LLC  
 NW 122nd AVENUE FROM  
 NW 25th STREET TO NW 41st STREET

PROJ. NO:	2015 53
DESIGNED:	SVZ
DRAWN:	BBL
CHECKED:	SVZ
SCALE:	AS SHOWN
DATE:	9/14/16
SHEET:	SW-2
	OF 3 SHEETS

SARAH V. ZIMMERMANN, P.E.  
 REGISTERED ENGINEER No. 24242  
 STATE OF FLORIDA

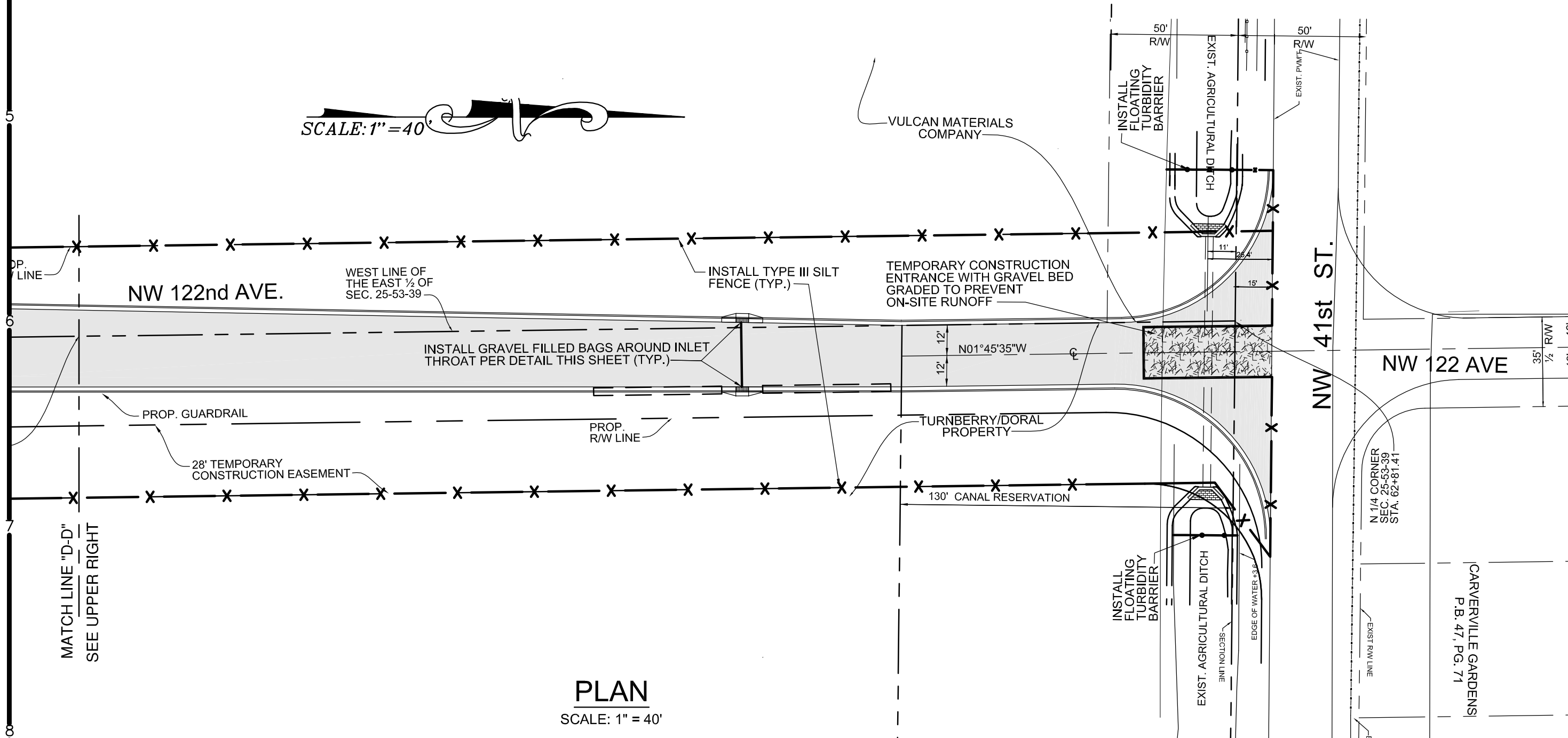


SCALE: 1" = 40'

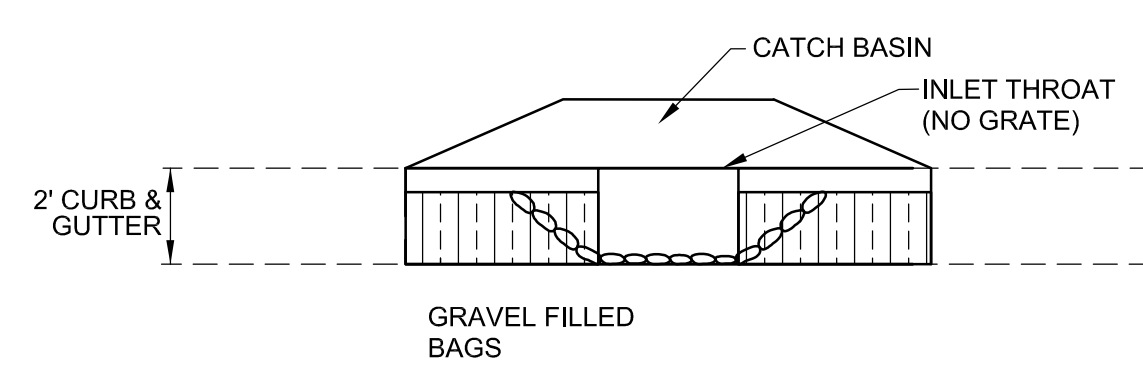
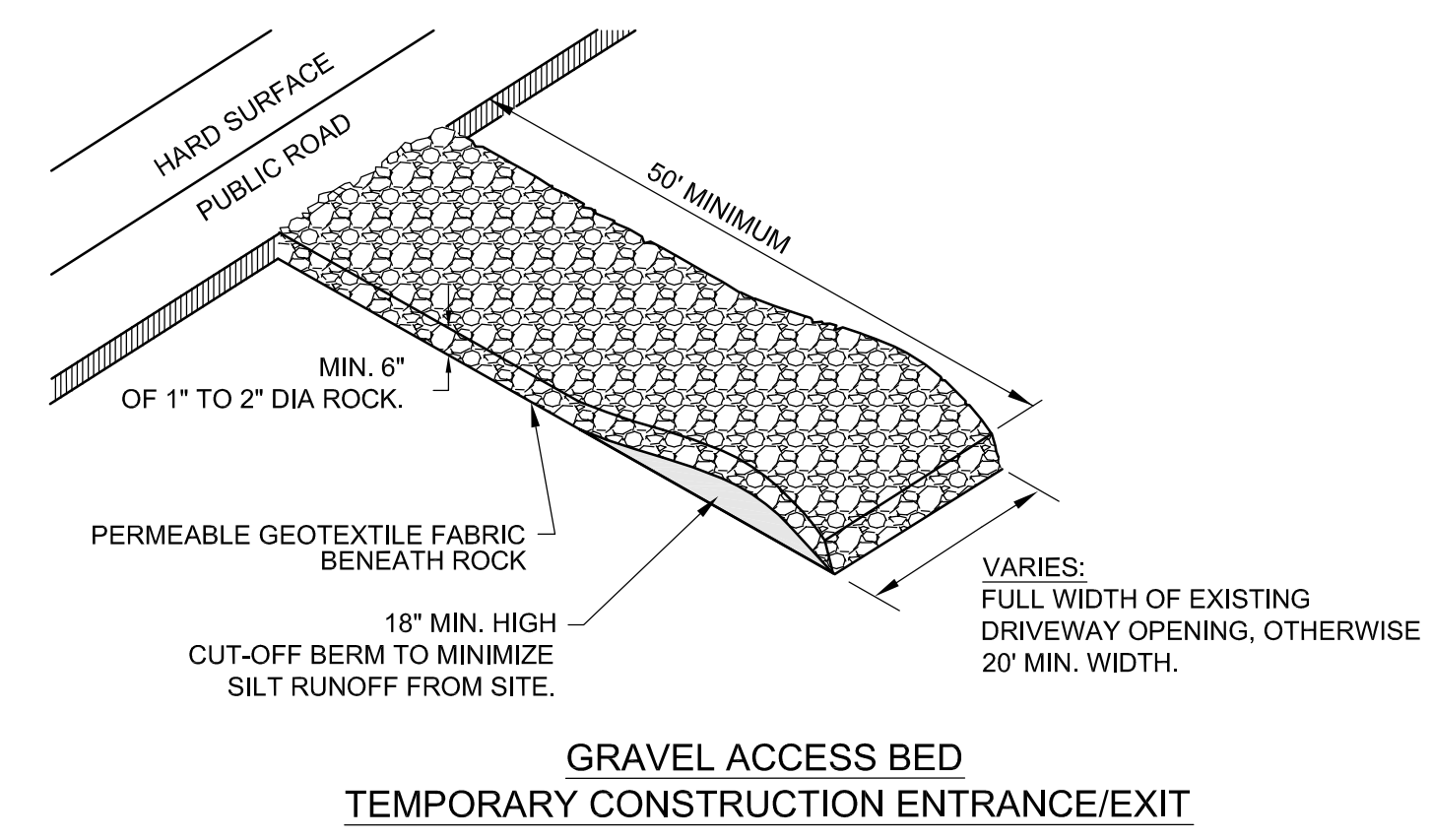


PLAN  
SCALE: 1" = 40'

SCALE: 1" = 40'



PLAN  
SCALE: 1" = 40'

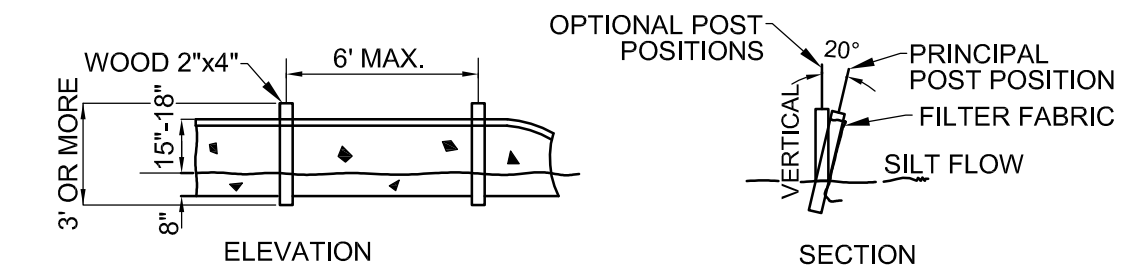


EXISTING AND PROPOSED CURB INLET  
EROSION/SEDIMENT CONTROL

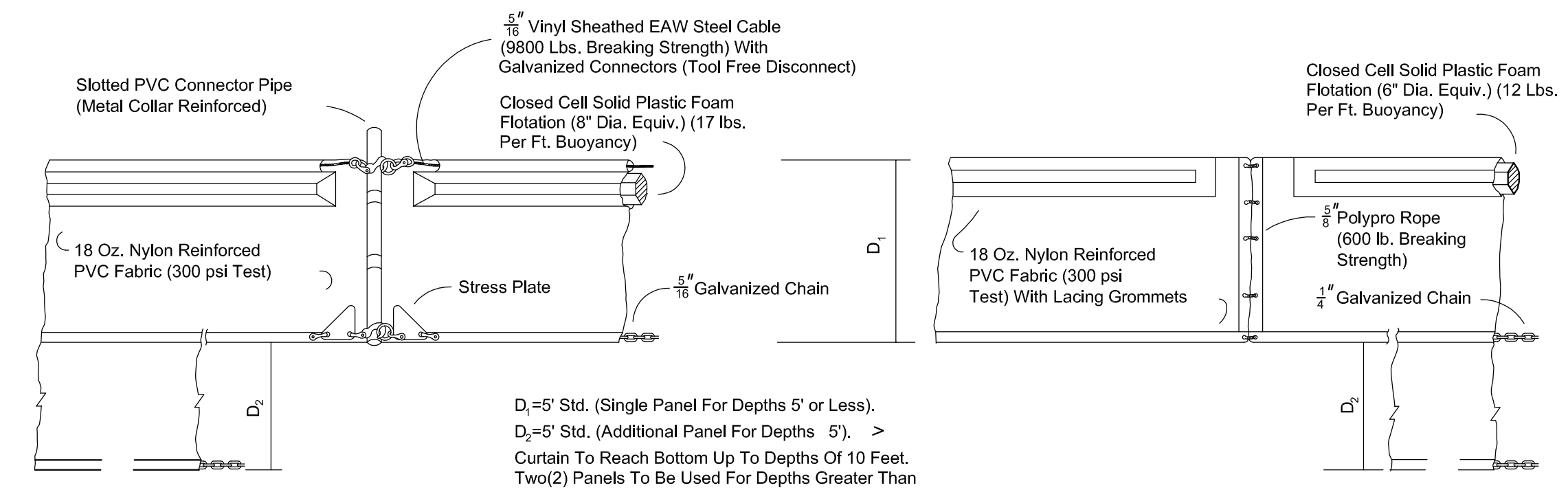
- NOTE:
1. CONTRACTOR TO INSTALL AT ALL INLETS THAT ARE IMMEDIATELY ADJACENT TO THE PROPERTY BOUNDARY.
  2. CONTRACTOR SHALL PERFORM DAILY INSPECTIONS OF GEO-TEXTILE FABRIC BARRIER AND AS NECESSARY REPLACE OR REPAIR AS REQUIRED, SPECIFICALLY AFTER STORM EVENTS AND LARGE RAINFALL EVENTS.
  3. SEDIMENTATION AND DEBRIS THAT ARE REMOVED FROM BARRIERS SHALL BE LEGALLY DISPOSED OF AT AN AUTHORIZED OFF-SITE DISPOSAL FACILITY.

LEGEND:

- X — TYPE III SILT FENCE AS PER FDOT ROADWAY AND TRAFFIC DESIGN STANDARDS INDEX No. 102 (2010)
- O — FLOATING TURBIDITY BARRIER AS PER FDOT ROADWAY AND TRAFFIC DESIGN STANDARDS INDEX No. 103 (2010)
- ▨ PROP. ASPHALT PAVEMENT
- ▩ PROP. CONCRETE PAVEMENT
- ▧ EXIST. ASPHALT PAVEMENT
- T — PROP. EXFILTRATION TRENCH AND TYPE P-6 CATCH BASIN



TYPE III SILT FENCE DETAIL  
(REFER TO FDOT INDEX No. 102 FOR ADDITIONAL INFORMATION)



D<sub>1</sub> = 5' Std. (Single Panel For Depths 5' or Less).  
 D<sub>2</sub> = 5' Std. (Additional Panel For Depths 5').  
 Curtain To Reach Bottom Up To Depths Of 10 Feet.  
 Two(2) Panels To Be Used For Depths Greater Than 10 Feet Unless Special Depth Curtains Specifically Called For In The Plans Or As Determined By The Engineer.

NOTICE: COMPONENTS OF TYPES - AND --- MAY BE SIMILAR OR IDENTICAL TO PROPRIETARY DESIGNS. ANY INFRINGEMENT ON THE PROPRIETARY RIGHTS OF THE DESIGNER SHALL BE THE SOLE RESPONSIBILITY OF THE USER. SUBSTITUTIONS FOR TYPES - AND --- SHALL BE AS APPROVED BY THE ENGINEER.

**FLOATING TURBIDITY BARRIERS**  
 (REFER TO FDOT INDEX No. 103 (2010) FOR ADDITIONAL INFORMATION)

SARAH V. ZIMMERMANN, P.E.  
 REGISTERED ENGINEER No. 24242  
 STATE OF FLORIDA

NO.	DATE	REVISIONS	BY

**LUDOVICI & ORANGE**  
 CONSULTING ENGINEERS, INC.  
 329 PALERMO AVENUE, CORAL GABLES, FLORIDA 33134 • 305/448-1000 • LB 1012

STORMWATER POLLUTION  
 PREVENTION PLAN  
 PLAN AND DETAILS

AMB CODINA BEACON LAKES LLC  
 NW 122nd AVENUE FROM  
 NW 25th STREET TO NW 41st STREET

PROJ. NO: 2015 53  
 DESIGNED: SVZ  
 DRAWN: BBL  
 CHECKED: SVZ  
 SCALE: AS SHOWN  
 DATE: 9/14/16  
 SHEET:

**SW-3**  
 OF 3 SHEETS

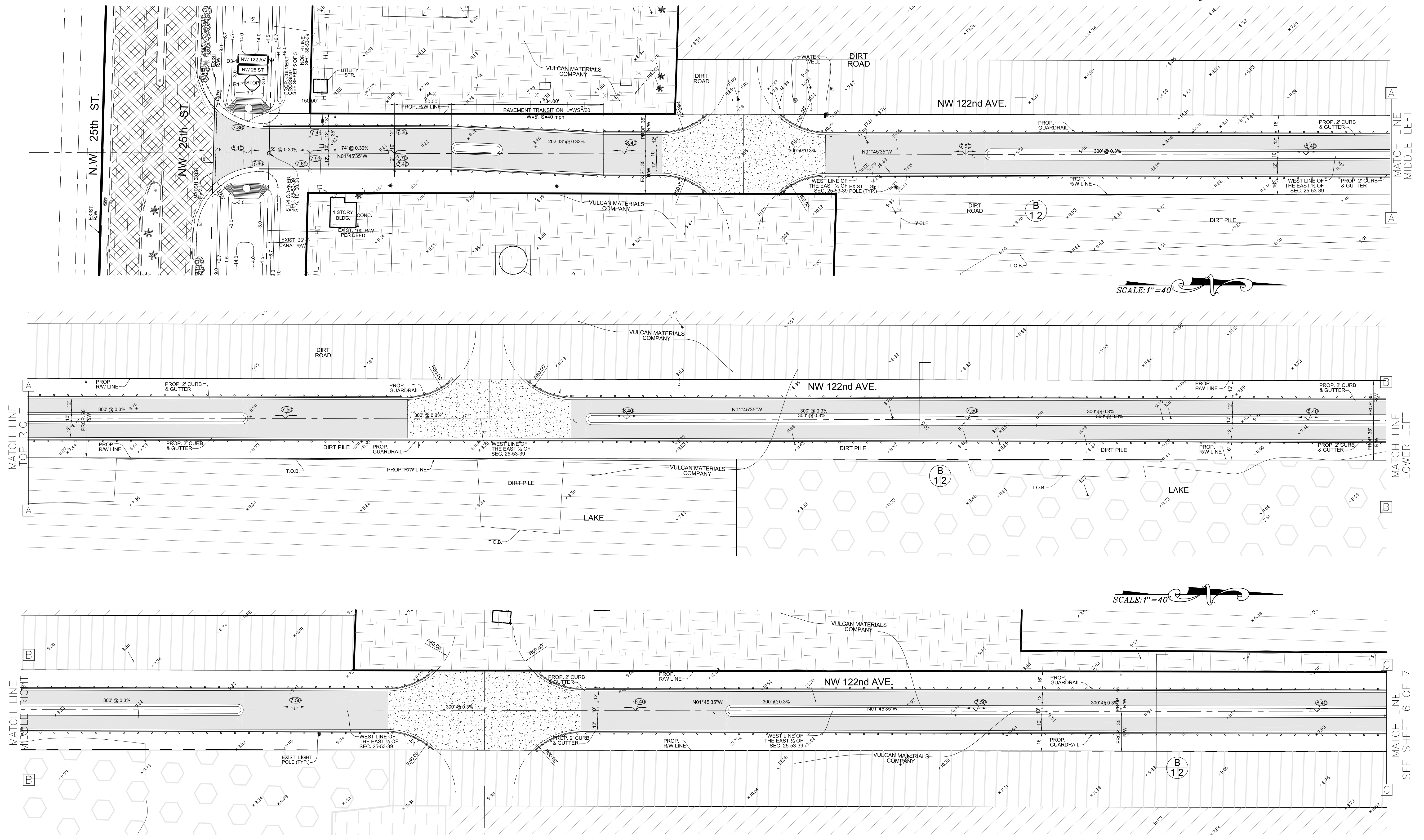
\\SERVER\DATA\ENGINEERING\PROJECTS\2015\2015 53 NW 122nd AVENUE FROM NW 25th STREET TO NW 41st STREET.dwg 9/14/2016 12:28:56 PM EDT



SCALE: 1" = 40'

SCALE: 1" = 40'

SCALE: 1" = 40'



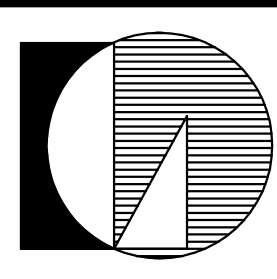
PLAN  
SCALE: 1" = 40'

**Sunshine811**  
 Call 811 or www.sunshine811.com two full business days before digging to have utilities located and marked.  
*Check positive response codes before you dig!*

CONTACT PERSON INFORMATION	
Name:	Sarah V. Zimmermann, P.E.
Telephone number:	305-448-1600
Fax number:	305-446-3876
e-mail address:	svz@ludovici-orange.com

SARAH V. ZIMMERMANN  
 REGISTERED ENGINEER #24242  
 STATE OF FLORIDA  
 LB 1012

NO.	DATE	DESCRIPTION	BY	APP.	NO.	DATE	DESCRIPTION	BY	APP.
RECORD OF REVISION									



**LUDOVICI & ORANGE**  
 CONSULTING ENGINEERS, INC.  
 329 PALERMO AVENUE, CORAL GABLES, FLORIDA 33134 TEL(305)448-1600 LB 1012

AMB CODINA BEACON LAKES FOR  
 VULCAN MATERIALS COMPANY

NW 122 AVENUE FROM  
 NW 25th STREET TO NW 41st STREET  
 PAVING, GRADING AND DRAINAGE  
 PLAN

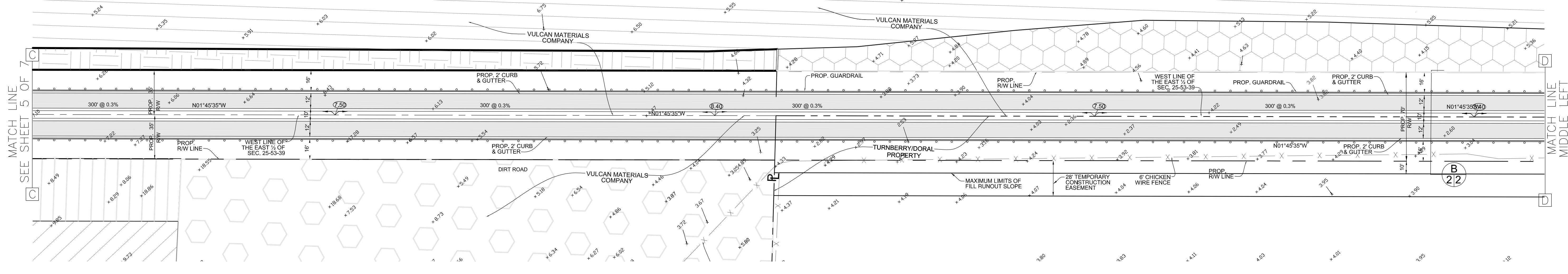
DWG. NO.:	2015 53
DESIGNED:	SVZ
DRAWN:	BBL
CHECKED:	SVZ
SCALE:	NOTED
DATE:	

PROJ. NO.: 2015 53  
 SHEET:  
**5**  
 OF 7 SHEETS

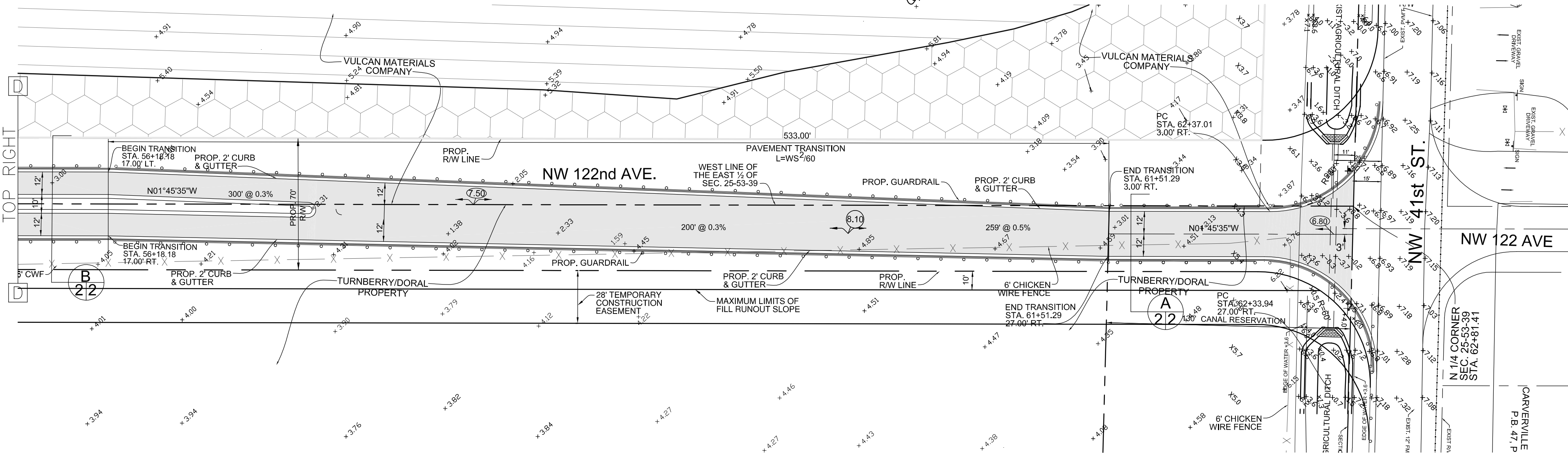
I:\SERVER\DATA\ENGINEERING\PROJECTS\2015\2015 53 NW 122nd AVENUE.pwg 2015 05 15 10:16:44am 0/2/2016 9:45:01 AM EDT



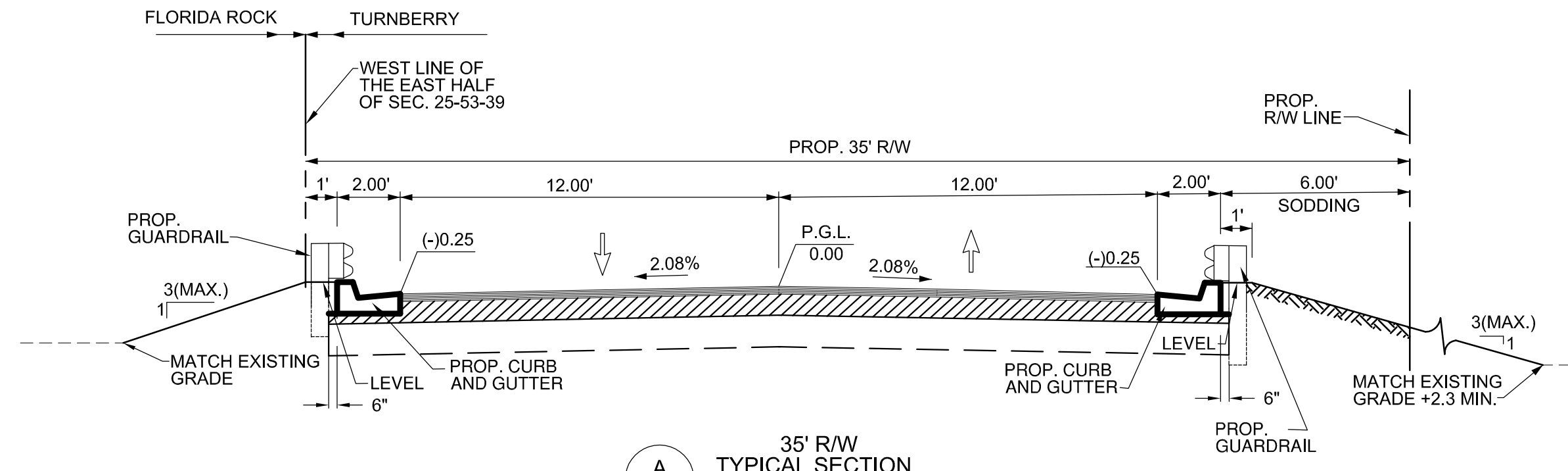
SCALE: 1" = 40'



SCALE: 1" = 40'

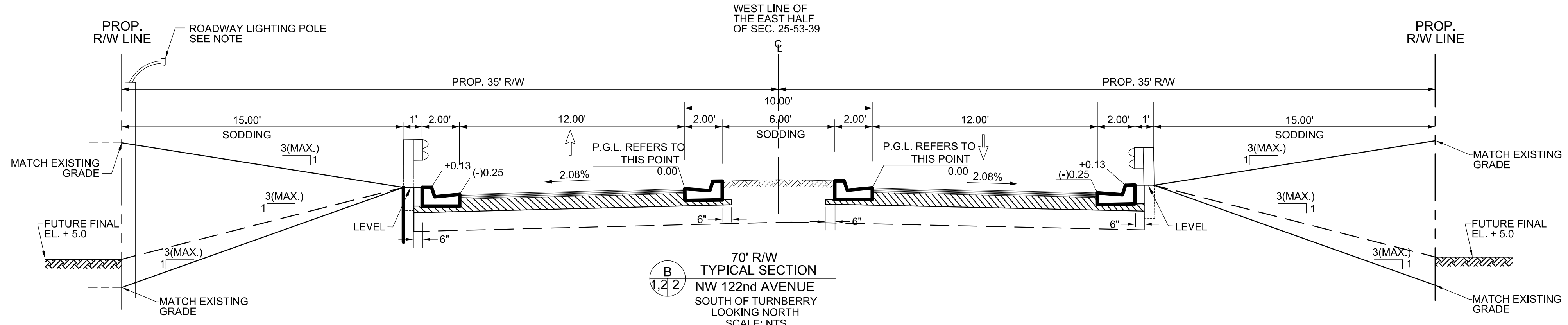
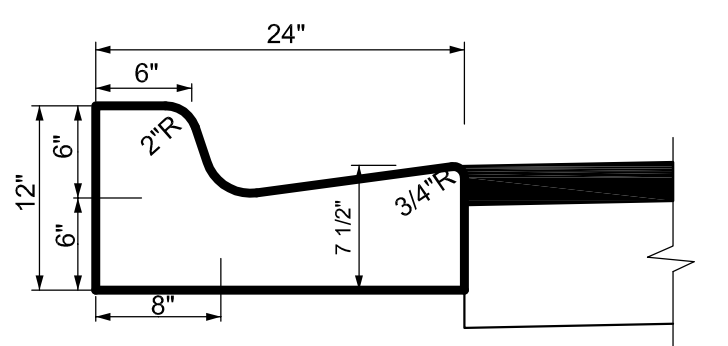


PLAN  
SCALE: 1" = 40'



A  
35' R/W  
TYPICAL SECTION  
NW 122nd AVENUE  
ADJACENT TO TURNBERRY  
LOOKING NORTH  
SCALE: 1" = 5'

12" STABILIZED SUBGRADE  
LIMEROCK BASE 8" THICK, PRIMED, LBR 100  
TYPE FC-9.5 ASPHALTIC CONCRETE: 1" THICK  
TYPE SP-9.5 ASPHALTIC CONCRETE: 1" THICK



B  
70' R/W  
TYPICAL SECTION  
NW 122nd AVENUE  
SOUTH OF TURNBERRY  
LOOKING NORTH  
SCALE: NTS

12" STABILIZED SUBGRADE  
LIMEROCK BASE 8" THICK, PRIMED, LBR 100  
TYPE FC-9.5 ASPHALTIC CONCRETE: 1" THICK  
TYPE SP-9.5 ASPHALTIC CONCRETE: 1" THICK

NOTE:  
POLE TO BE DESIGNED AND INSTALLED AT A  
DEPTH SUCH THAT THE BASE IS DEEP ENOUGH  
TO ACCOMMODATE A FUTURE FINAL GRADE  
ELEV. +5.0

- LEGEND
- LITTORAL A = 23.92± ACRES
  - LITTORAL B = 3.44± ACRES
  - LITTORAL C = 10.48± ACRES
  - TREE ISLAND = 20.88± ACRES
  - SAWGRASS/MUHLYGRASS PRAIRIE = 17.2± ACRES
  - MIAMI-DADE COUNTY MITIGATION = 3.33± ACRES
  - NATURAL GRADE
  - EXISTING PIT
  - PROPOSED RIGHT OF WAY FOR N.W. 122ND AVENUE  
EAST 35' OF 122ND = 3.15± ACRES  
WEST 35' OF 122ND = 4.19± ACRES  
+2.9' ON WEST SIDE = 0.34± ACRES
  - REMAINING AREA TO BE MINED
  - LAND TO REMAIN

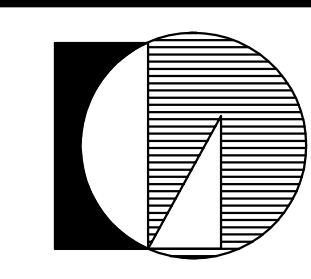
- NOTES:
- 1) ACTUAL ACRES AND BOUNDARIES SUBJECT TO FIELD VERIFICATION.
  - 2) LITTORAL AREAS MAY BE MINED TO DEPTH AND REFILLED.
  - 3) ANY AREA NOT MINED WILL HAVE A FINAL ELEVATION ABOVE THE MIAMI/DADE FLOODPLAIN CONTROL ELEVATION.
  - 4) FINAL ELEVATIONS TO BE CONFIRMED AT THE TIME OF LITTORAL AREA CONSTRUCTION AND BASED UPON SPECIFIC GROUNDWATER ELEVATIONS FOR THE SUBJECT AREA.
  - 5) REFER TO FIGURE 6 FOR PLANTING SPECIFICATIONS.

CONTACT PERSON INFORMATION  
Name: Sarah V. Zimmermann, P.E.  
Telephone number: 305-448-1600  
Fax number: 305-446-3876  
e-mail address: svz@ludovici-orange.com

**Sunshine811**  
Call 811 or www.sunshine811.com two full business days before digging to have utilities located and marked.  
*Check positive response codes before you dig!*

SARAH V. ZIMMERMANN, P.E.  
REGISTERED ENGINEER No. 24242  
STATE OF FLORIDA

NO.	DATE	DESCRIPTION	BY	APP.	NO.	DATE	DESCRIPTION	BY	APP.
RECORD OF REVISION									



**LUDOVICI & ORANGE**  
CONSULTING ENGINEERS, INC.  
329 PALERMO AVENUE, CORAL GABLES, FLORIDA 33134 TEL:(305)448-1600 LB 1012

AMB CODINA BEACON LAKES FOR  
VULCAN MATERIALS COMPANY

NW 122 AVENUE FROM  
NW 25th STREET TO NW 41st STREET  
PAVING, GRADING AND DRAINAGE  
PLAN AND SECTIONS

DWG. NO.: 2015 53	PROJ. NO.: 2015 53
DESIGNED: SVZ	SHEET:
DRAWN: BBL	<b>6</b>
CHECKED: SVZ	OF 8 SHEETS
SCALE: NOTED	
DATE:	